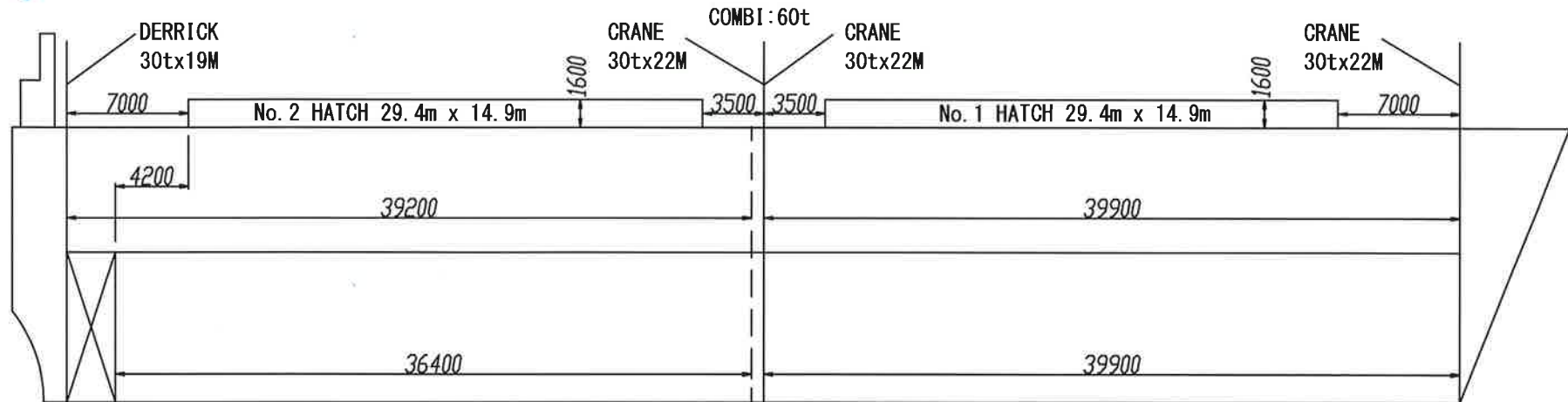
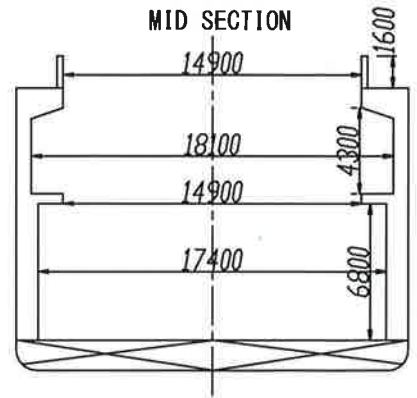
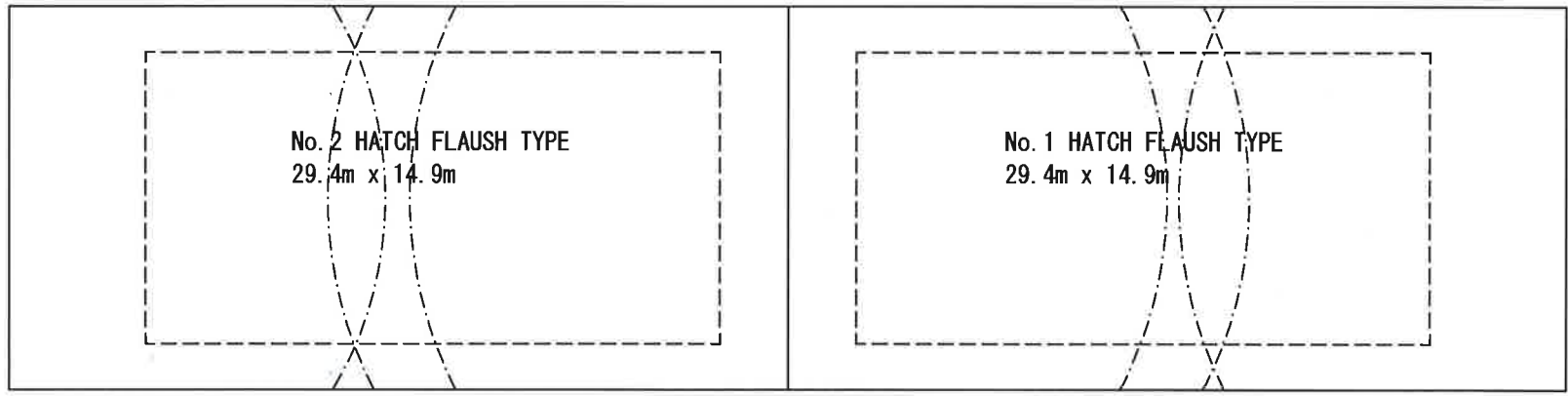


# MV. TOYO ENERGY



UPPER DECK



TANK TOP : 13.00T/M2  
 T/D : 3.9T/M2  
 FRAME SPACE : 700MM  
 TPC : 19.74T/CM

PRINCIPAL PARTICULAR	
LOA	116.99M
Lpp	109.00M
B(mid)	19.60M
D(mid)UPP	14.00M
D(mid)2ND	8.70M
DRAFT	8.665M
G/T	8,552T
N/T	3,617T
D/W	11,529.82T

