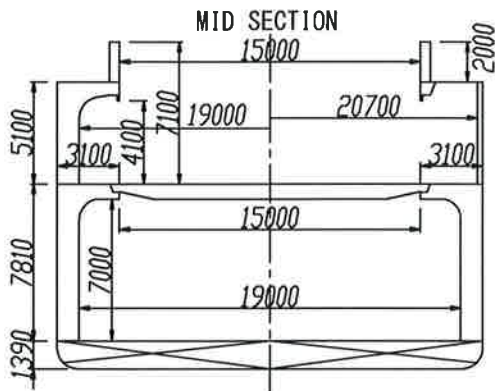
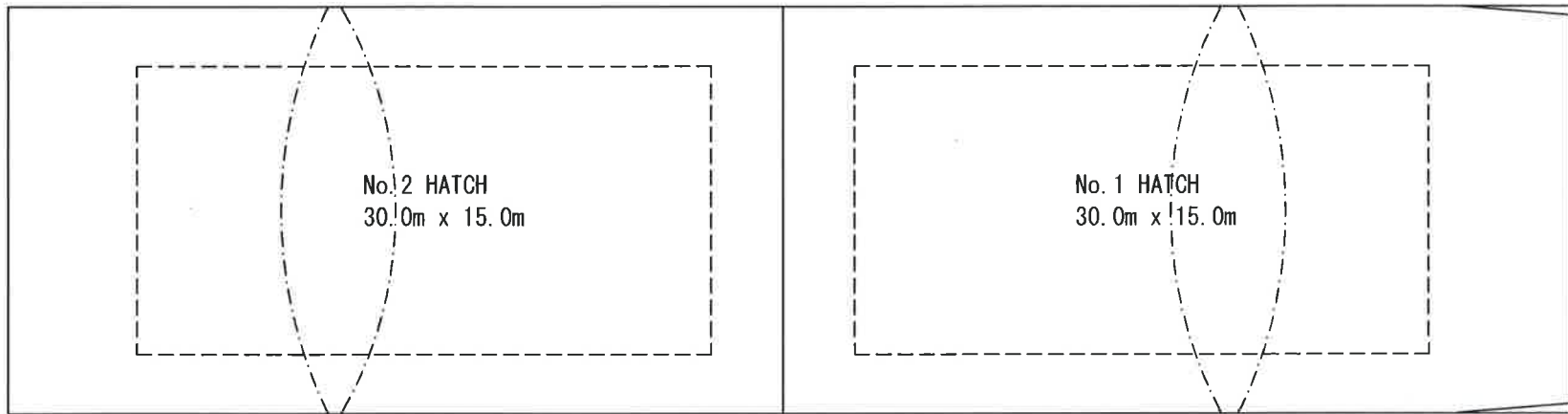
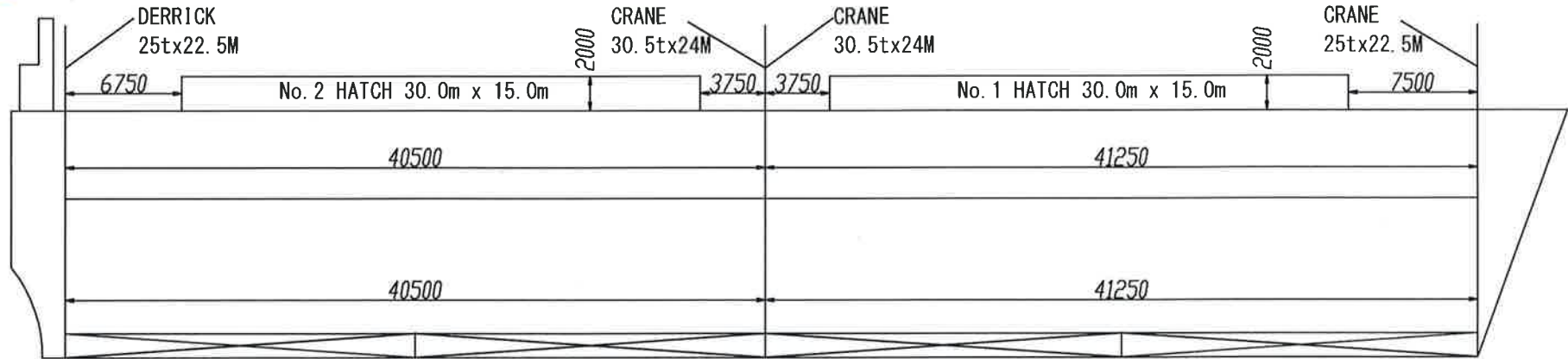
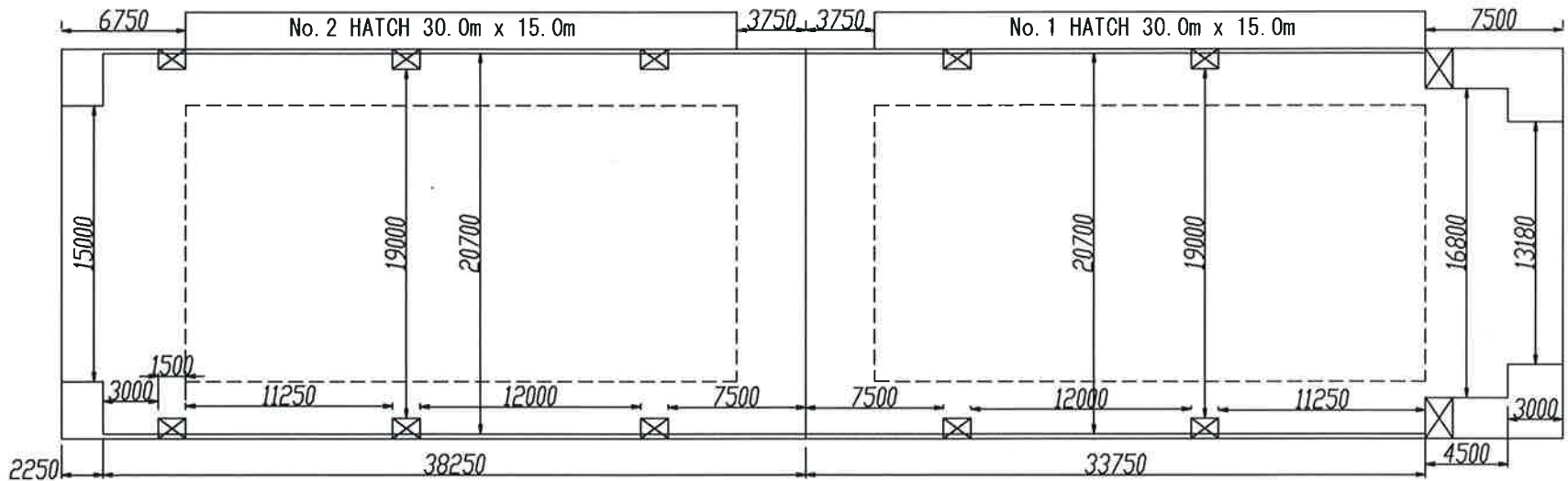


# MV. TOYO STAR



PRINCIPAL PARTICULAR	
LOA	120.00M
B(mid)	21.20M
D(mid)UPP	14.30M
DRAFT	8.50M
G/T	9,684T
D/W	12,121T
G. CAPA	20,576.55M3
B. CAPA	19,888.61M3

SECOND DECK



BOTTOM

