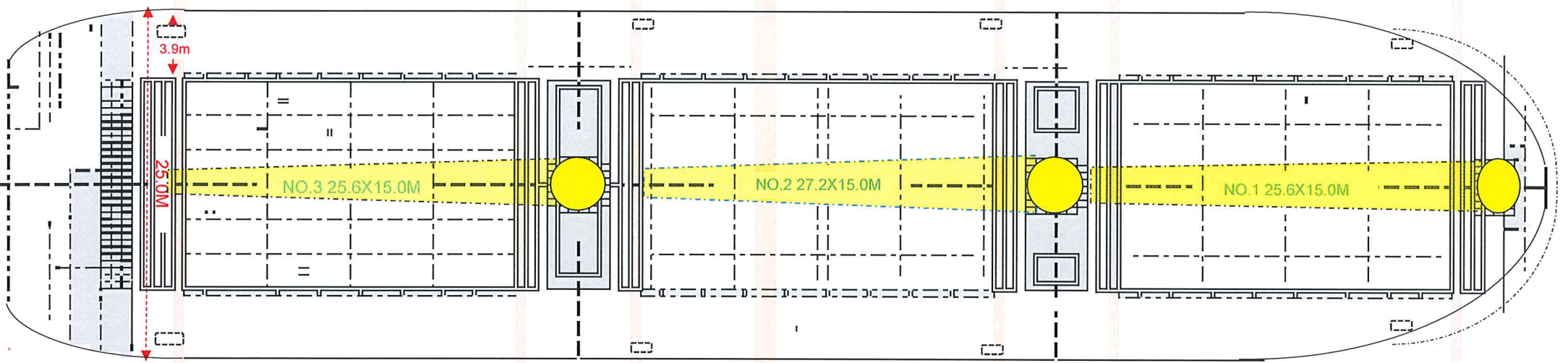
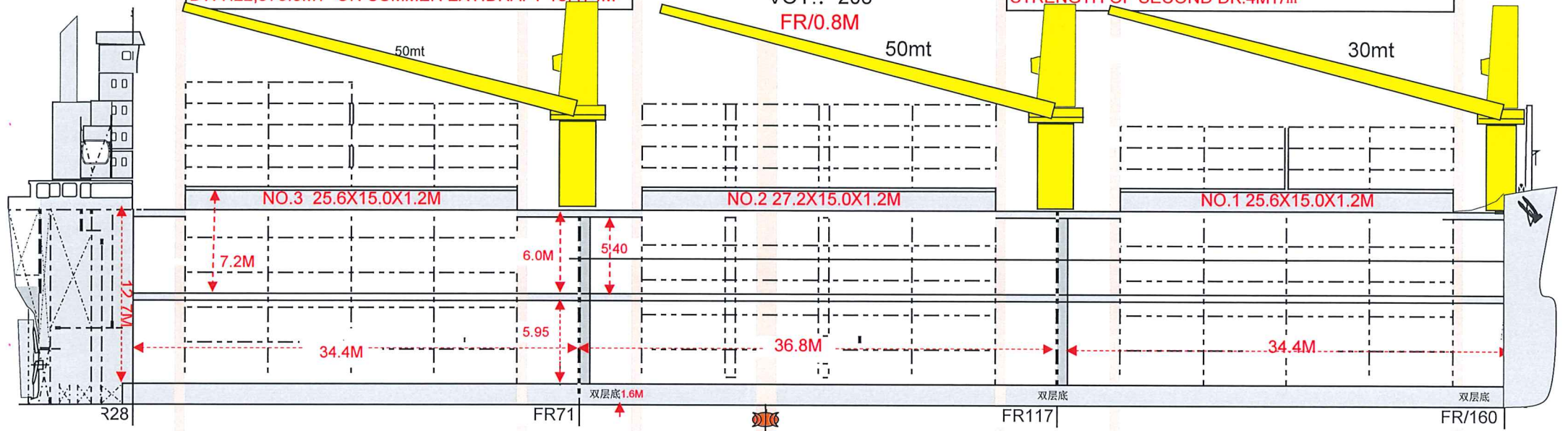


L/B/D:141.396/25.0/14.3M
 G/B CAPA.:29449.2/27204.4M3
 DWT:22,979.9MT ON SUMMER EXT.DRAFT 10.474M

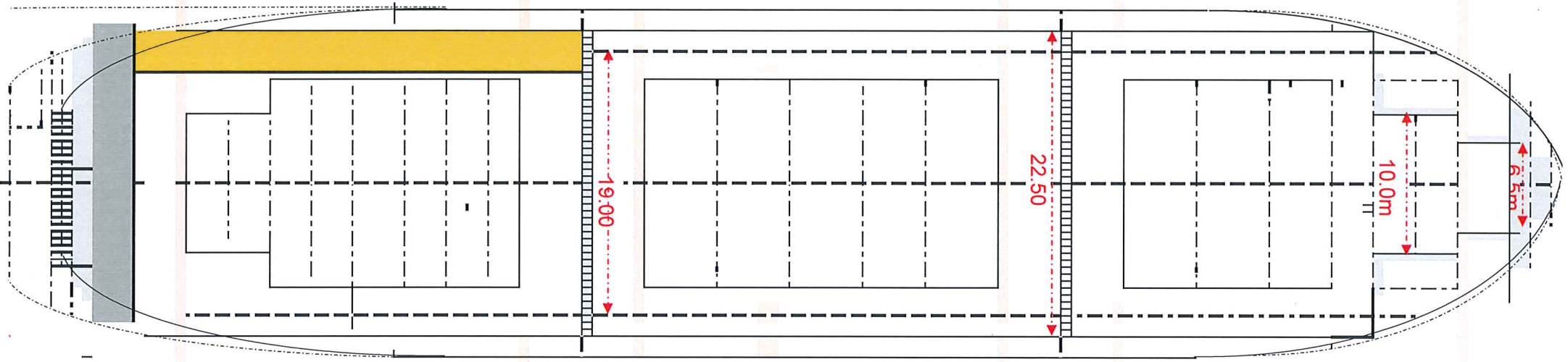
MV TOYO WORLD

VOY.: 208
 FR/0.8M

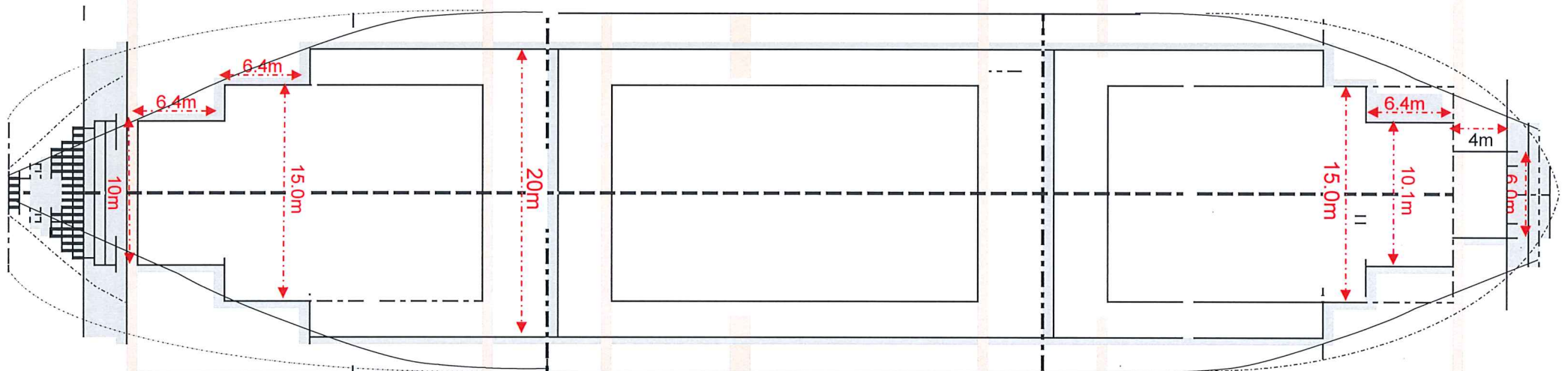
STRENGTH OF COVER:2.0T/m²
 STRENGTH OF BOTTM:15MT/m²
 STRENGTH OF SECOND DK:4MT/m²



HATCH COVER



SECOND DECK



TANK TOP

| | LH | TD | DECK | TOTAL |
|-------|-----|-----|------|-------|
| NO.1 | NIL | NIL | NIL | |
| NO.2 | NIL | NIL | NIL | |
| NO.3 | NIL | NIL | NIL | |
| TOTAL | | 0 | 0 | 0 |

CARGO HOLD (BALE)

| TANK NAME | LOCATION (PR. NO.) | VOLUME (m ³) | WEIGHT (t) | CENTER OF GRAVITY | |
|----------------------------|--------------------|--------------------------|------------|-------------------|---------|
| | | | | MID. G (m) | K G (m) |
| NO. 1 C. HOLD (LOW) (BALE) | (C) 117 - 160 | 3,510.64 | - | -37.17 | 4.79 |
| NO. 1 C. HOLD (UPP) (BALE) | (C) 117 - 160 | 5,014.65 | - | -38.75 | 11.77 |
| NO. 2 C. HOLD (LOW) (BALE) | (C) 71 - 117 | 4,536.02 | - | -4.05 | 4.73 |
| NO. 2 C. HOLD (UPP) (BALE) | (C) 71 - 117 | 5,655.92 | - | -4.08 | 11.71 |
| NO. 3 C. HOLD (LOW) (BALE) | (C) 32 - 71 | 3,234.60 | - | 28.03 | 4.70 |
| NO. 3 C. HOLD (UPP) (BALE) | (C) 28 - 71 | 5,262.00 | - | 31.51 | 11.79 |
| TOTAL | - | 27,204.39 | - | - | - |